

## DIRECTIONS

From Natal take the BR-101 in the direction of Touros. Pass the turn off for Touros and take the next left for São Miguel do Gostoso. Pass the entrance to São Miguel do Gostoso and continue until you reach the main crossroads. In front of the Post Office (Correios) turn right towards Praia da Xêpa. At the T-junction turn right. The entrance for Pousada Chantilly is directly in front.



Avenida Enseada das Baleias 1403  
Praia da Xêpa - São Miguel do Gostoso  
RN 59585-000 Brasil.  
+55 (84) 9 9424-3677 (claro / whatsapp)

**GUEST OPINION:** "TRAVELING IN RIO GRANDE DO NORTE, WE ARE VERY HAPPY TO HAVE BEEN ABLE TO FIND IN SÃO MIGUEL DO GOSTOSO A POUSADA OF THIS QUALITY. IN THE SETTING OF A FISHING VILLAGE IT IS A PLACE AT THE SAME TIME LIVELY AS PEACEFUL, AND THE LOCATION OF POUSADA CHANTILLY, ON THE BEACHFRONT, IS EXCELLENT."

## RESERVATIONS

[WWW.POUSADACHANTILLY.COM](http://WWW.POUSADACHANTILLY.COM)

+55 (84) 99424-3677

pousada\_chantilly

pousadachantilly

pchantilly

pousadachantilly

Pousada Chantilly



**POUSADA  
CHANTILLY**

sinta-se em casa

São Miguel do Gostoso



Beachfront & Central

Double & Triple  
Rooms

Verandas with beach  
and pool views

Open air pool

**AN IDYLIC GETAWAY  
FULL OF CHARM**



**SÃO MIGUEL DO GOSTOSO**, located 110 km north of Natal, is a picturesque fishing village and a fast growing tourist destination. **Praia da Xêpa**, where you will find **POUSADA CHANTILLY**, is in the center of town and renowned for its pristine beach and excellent restaurants and bars. **Praia da Ponta do Santo Cristo**, world famous for wind and kitesurfing, is just a short walk away. **Praia do Tourinhos**, considered one of the most beautiful beaches in the northeast of Brasil, is a 15 minute drive.



**WELCOME**

**POUSADA CHANTILLY** is a small, charming guesthouse located directly on the beachfront of Praia da Xêpa. It is set in a beautiful garden with an abundance of tropical flowers and a refreshing pool with unique fountain. **All rooms have private verandas with a view to the pool and the sea.** A delicious breakfast is served daily on an open terrace. Pousada Chantilly offers a familiar service. .

**Restaurants - Rua Praia da Xêpa & Terminal Turístico**  
 Jardim do Seridó, Palmira, Pantai, Borogodó, Quintal, Genesis, Bistro 70m2, Gostoseria e Golfinho Azul.



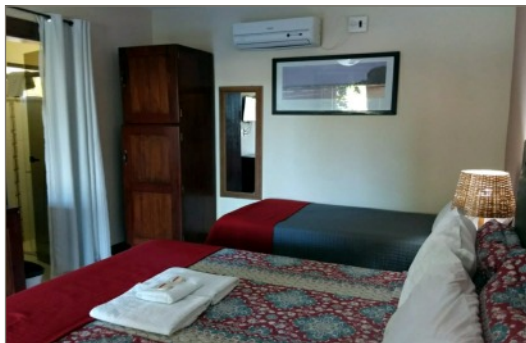
## ENJOY YOUR STAY

### SUPERIOR DOUBLE (2)



Our **SUPERIOR DOUBLE**, on the first floor, is a comfortable size. The veranda has a hammock and chairs from which you can enjoy **an unforgettable and clear view of the beach and sea.** This room is **ideal for couples.**

### MÁSTER DOUBLE / TRIPLE (2)



Our **MASTER DOUBLE / TRIPLE**, on the ground floor, is a comfortable size. The veranda has a hammock and chairs from which you can enjoy **a beautiful view of the beach and garden. Ideal for families or friends.**



### STANDARD DOUBLE (2)



Our **STANDARD DOUBLE**, on the ground floor, is a cosy size. The veranda has a hammock and chairs from which you can enjoy **an exuberant view of the beach and garden. Ideal for individuals and couples.** These room are located closest to the beach.

### BASICO DOUBLE (2)

Similar to our Standard Double, but located near to the swimming pool.

Free breakfast

Wi-Fi in all areas

All televisions with SKY

All rooms have mini-bars

Free parking on site

### PACKAGES

